

QUICK START GUIDE

Power tray for 8 DP 1.2 optical extenders

Ref. OPT-DP-POWERTRAY



ANALOG WAY[®]
Pioneer in Analog, Leader in Digital

Thank you for choosing the **OPT-DP-POWERTRAY**. By following these simple steps, you will be able to set up and use your power tray within minutes.

WHAT'S IN THE BOX

- 2 x Power supply cords
- 8 x Optic fiber cables: OM3 1Ch SC 220mm
- 8 x Power connection cables for EXT-DP12-OPT optical extenders
- 8 x Washer nickel screws (3x5)
- 1 x Quick start guide including safety instructions*

*Quick start guide is also available on www.analogway.com

Register
your product

Go on our website to register your product(s) and be notified about new firmware versions:
<http://bit.ly/AW-Register>

OVERVIEW

The **OPT-DP-POWERTRAY** power tray is a 2RU size enclosure accessory that can hold up to 8 DisplayPort 1.2 over fiber transmitters and receivers. The optical extenders mounted on the **OPT-DP-POWERTRAY** power tray are reliably powered by two integrated redundant AC/DC power supplies.

SAFETY INSTRUCTIONS

Please read and keep the information in the attached safety instructions supplied with the product before starting using the device.

**CLASS 3R LASER PRODUCTIF
OPTICAL EXTENDERS ARE
INSTALLED**

WARNING

The apparatus shall not be exposed to dripping or splashing and that no objects filled with liquids, such as vases, shall be placed on the apparatus. No naked flame sources, such as lighted candles, should be placed on the apparatus.

WEEE (Waste Electrical & Electronic Equipment)

Correct Disposal of This Product: This marking shown on the product or its literature, indicates that it should not be disposed with other household wastes at the end of its working life. To prevent possible harm to the environment or human health from, uncontrolled waste disposal, please separate this from other types of wastes and recycle it responsibly to promote the sustainable reuse of material resources.



Household users should contact either the retailer where they purchased, this product, or their local government office, for details of where and how they can take this item for environmentally safe recycling. Business users should contact their supplier and check the terms and conditions of the purchase contract. This product should not be mixed with other commercial wastes for disposal.

ASSEMBLY STEPS OF THE EXT-DP12-OPT EXTENDERS

The following assembly guide is for help the correct installation of the **EXT-DP12-OPT** extenders to the Power Tray step by step.

STEP 1

Remove the “Foot rubber” of the **EXT-DP12-OPT** extender products.



STEP 2

Disassemble the screw of product side.



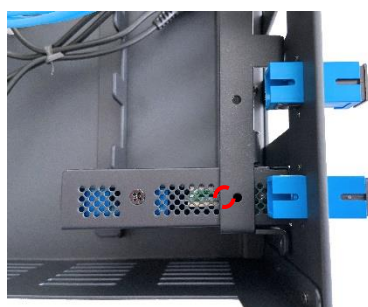
STEP 3

Loosen the 5 screws of the extenders mounting bracket on the front panel to give some slack and ease the insertion of the **EXT-DP12-OPT** optical extenders into their slots.



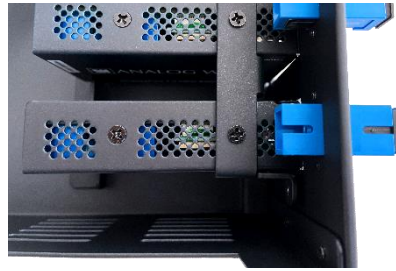
STEP 4

Install the **EXT-DP12-OPT** optical extender into the power tray. Make sure to match hole of the **OPT-DP-POWERTRAY** bracket with hole of the **EXT-DP12-OPT** optical extender.



STEP 5

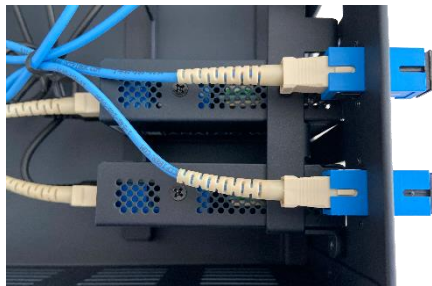
Tighten the screw securely.



When all the EXT-DP12-OPT optical extenders have been installed, tighten the 5 screws of the extenders mounting bracket on the front panel.

STEP 6

Remove the dust caps from extender and fiber optic cable. Connect the fiber optic cable and DC power jack.



STEP 7

Connect two AC plugs to inlet of the **OPT-DP-POWERTRAY** chassis. The **OPT-DP-POWERTRAY** has load shared dual power supplies to run the system stable without any disruption. So, it is highly recommended to connect separate power source to AC IN1 and AC IN2 to avoid power failure problem.

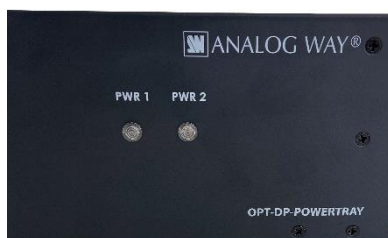
STEP 8

Turn on PS1 and PS2.

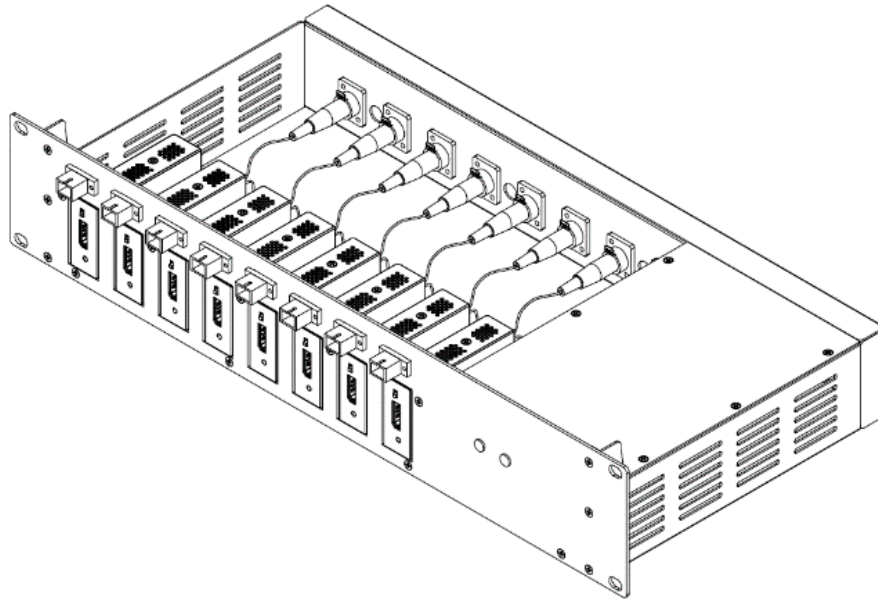


STEP 9

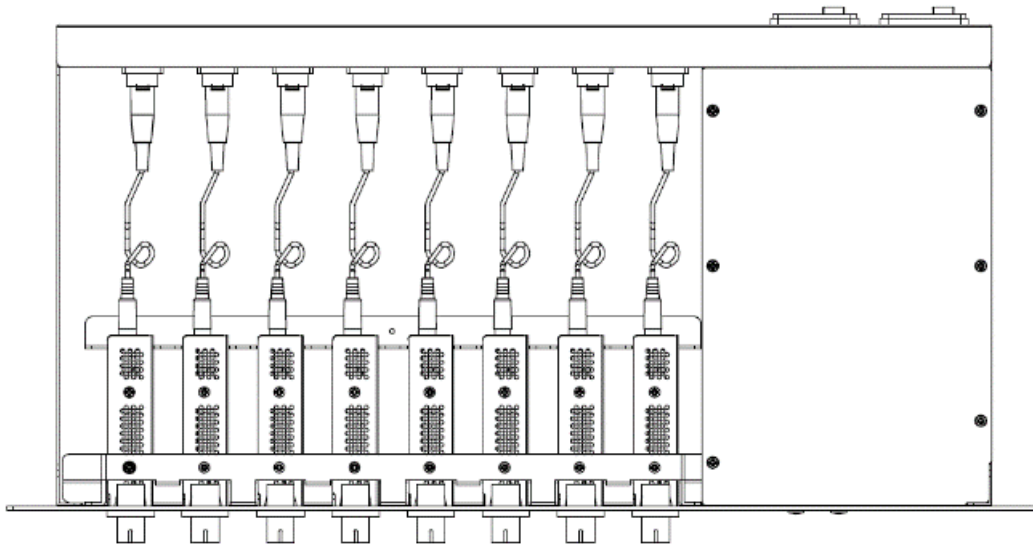
Check the LED of Powers change to Blue.



SIDE VIEW



TOP VIEW



WARRANTY AND SERVICE

This **Analog Way** product has a 1-year warranty on parts and labor (back to factory). Broken connectors are not covered by warranty. This warranty does not include faults resulting from user negligence, special modifications, electrical surges, abuse (drop/crush), and/or other unusual damage. In the unlikely event of a malfunction, please contact your local **Analog Way** office for service.

FURTHER INFORMATION

Please visit our website for further information: www.analogway.com.

Manufactured for Analog Way by OPHIT CO. LTD in Republic of Korea - Head Office. #908~911/103, Digital Empire2, 88 Sinwon-ro, Yeongtong-gu Suwon-si, Gyeonggi-do, 16681, Republic of Korea - Tel. +82-31-695-5543