

INTRODUCTION

Crestron® driver for LivePremier™ series

V2.3.0

Developed by

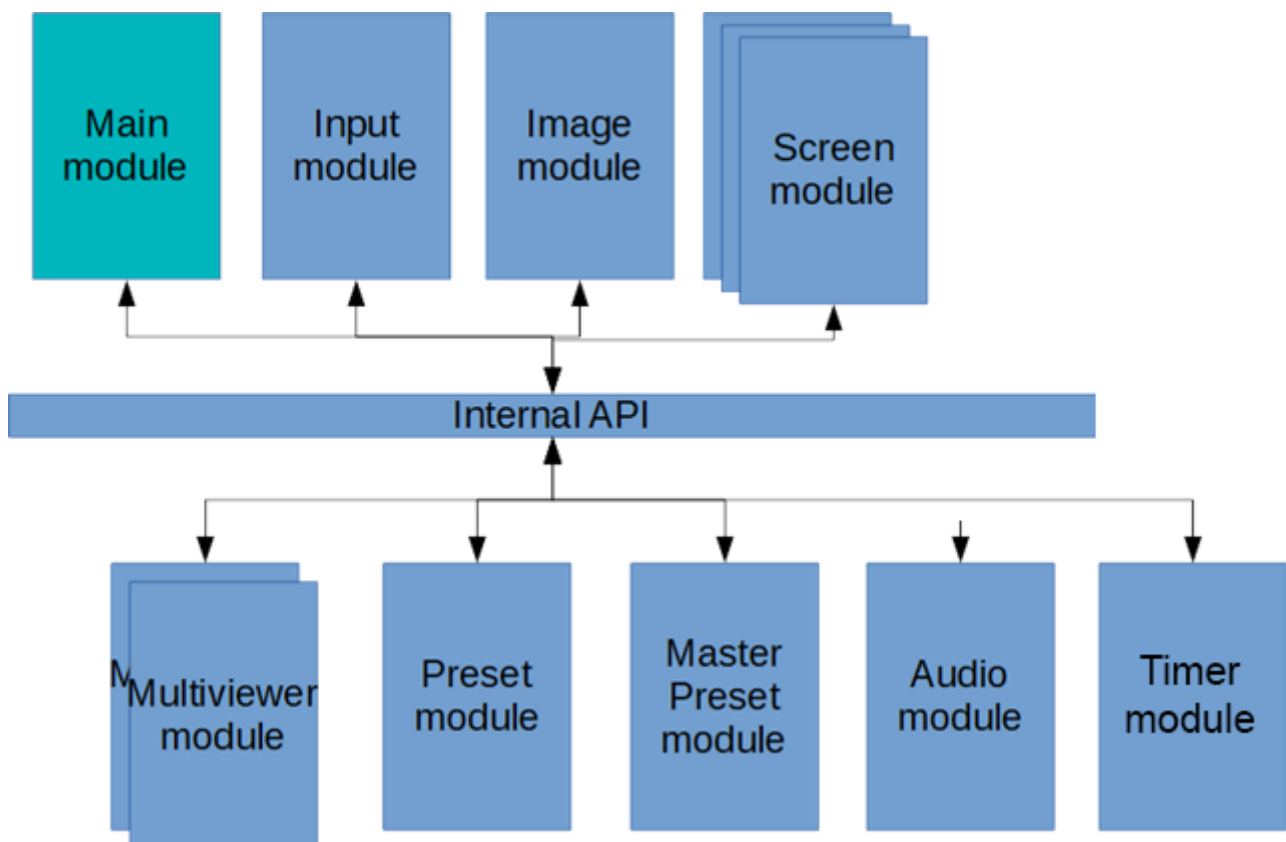


ANALOG WAY®
Pioneer in Analog, Leader in Digital

Description

The **Crestron driver for the LivePremier™** series allows developers to remotely control the standard features of any LivePremier™ live presentation switcher from any Crestron 3-Series or 4-series control system. The driver provides several functional modules (**Main** module is required; the others are optional) that can be combined according to your needs. You can load the example provided to see how they are structured/built.

Driver Modularity



Package content

The package contains the following components:

- The modular Crestron driver for the LivePremier™ series
- A SIMPL+® example program that demonstrates the different features supported by the driver
- A XPanel project running with the SIMPL+® sample program provided
- Help files in English

Key features

- Recall Screen/Aux Presets or Master Presets
- Display live sources and still image sources with dynamic snapshots and properties
- Change the background of a Screen or the source displayed in a layer
- Change the source displayed by an auxiliary output
- Transitioning the Preview content to the Program
- Configure multiviewer output(s) widget sources
- Recall multiviewer presets
- Route de-embedded audio channels or Dante input audio channels to video outputs
- Control built-in timers
- Control device (reboot, shutdown, sleep or wake over LAN)

Requirements

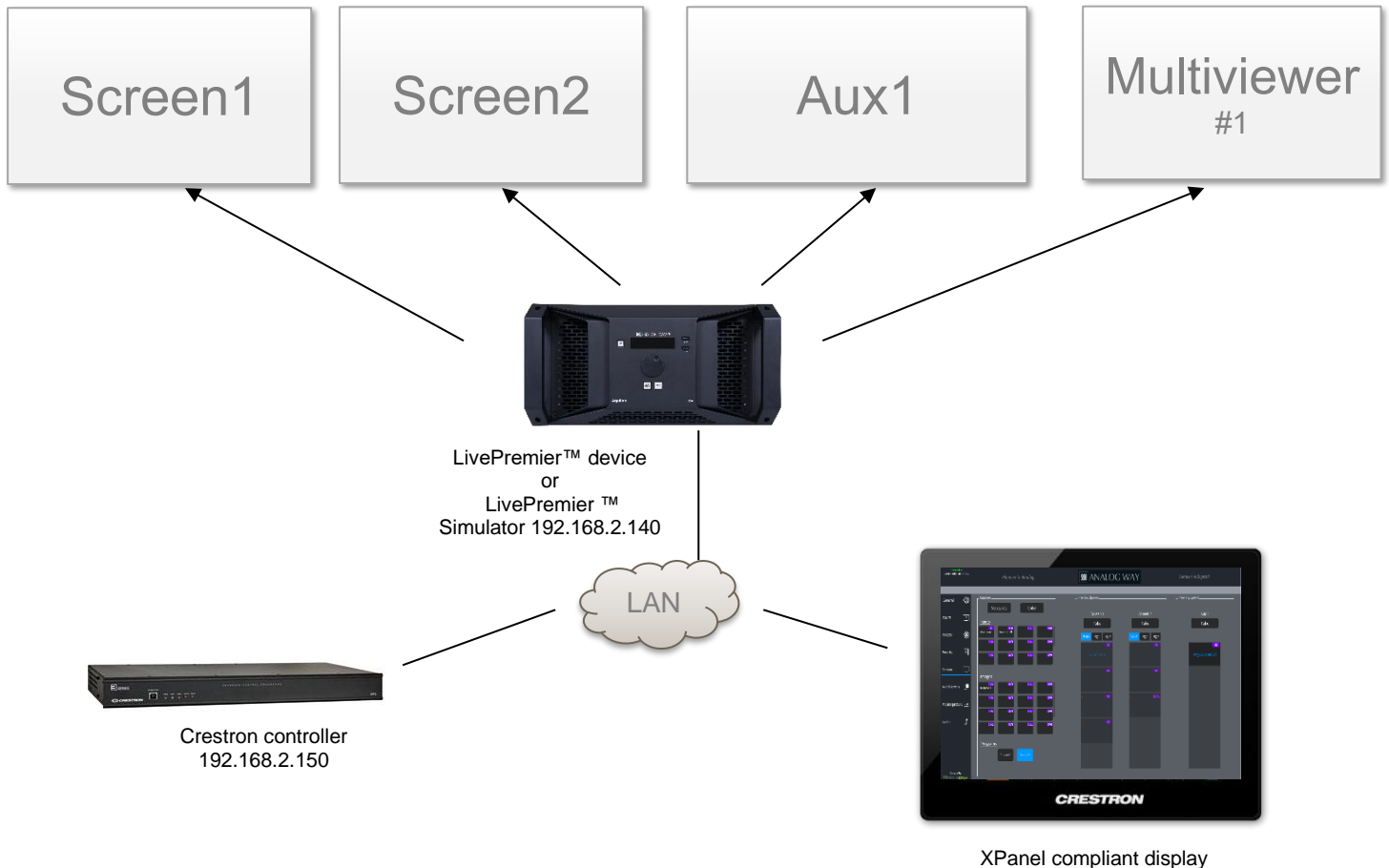
- Any Analog Way LivePremier™ live presentation switcher or the LivePremier™ Simulator
- A 3-series or 4-series Crestron processor with Ethernet connection
- Any Crestron XPanel compliant display

Recommended software versions

Software	Versions
LivePremier™ firmware	2.00.231 or above
LivePremier™ Simulator	1.2.7 or above
SIMPL Windows	4.11.06 or above
VTPro-e	6.2.00.03 or above
Smart Graphics™	2.15.04.00 or above
Device database	200.05.001.00 or above
Crestron database	201.00.004.00 or above
Simpl+ cross compiler	1.3 or above

Configuration and settings for running the 'advanced' example

The example provided within the package has been designed to control a LivePremier™ live presentation switcher with two Screens (Screen 1 and Screen 2), one Auxiliary output (Aux 1) and one Multiviewer (out #1). Before running this sample, please make sure your configuration (as well as the IP addresses) matches the diagram below:



The example also uses few screen presets and master presets that should be created with the Web RCS before running it:

- 10 presets common to both screens and auxiliary outputs
- Screen 1 and Screen 2 contain 4 layers
- Aux 1 can be used to display screen programs (scaled)
- Multiviewer 1 is used to preview sources, images or screens program (10 widgets can be controlled by the demo application)

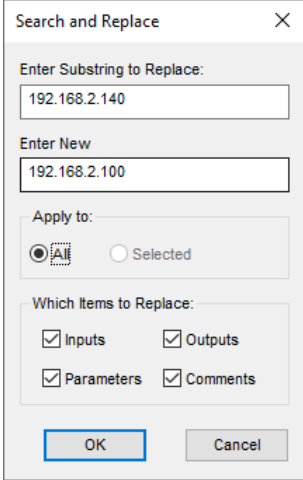
Of course, you can reuse this example as much as necessary to implement your own solution.

Note that the included demo touchpanel is built using Smart Graphics™ elements, however the underlying controls available in the module can be linked to a touchpanel implementation of your choice, and therefore can be implemented with or without Smart Graphics™ for use on Ipad, Xpanel, etc.

Customize the IP address of the LivePremier™ device

Before running the demo program to control your own LivePremier™ live presentation switcher or your LivePremier™ Simulator, it is important to customize some settings regarding the LivePremier™ device that will be controlled:

- Open the LivePremier™ SIMPL demo program (*LivePremierCrestronDemo.smw*). There are two versions of the demo program available, one for the 3-series and one for the 4-series Crestron processors. Select the one that matches the type of controller you intend to use.
- If the program will control a real LivePremier™ device, then select the *S-1: Init* folder and press F9 to replace the default IP address (192.168.2.140) with your LivePremier™ device IP address (ex. 192.168.2.100):



Search and Replace

Enter Substring to Replace:
192.168.2.140

Enter New
192.168.2.100

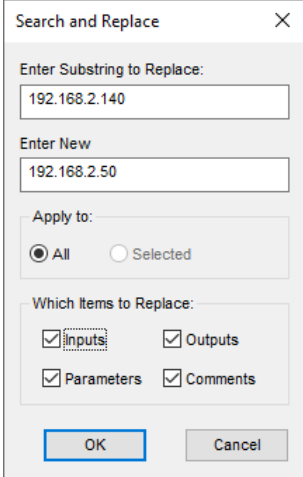
Apply to:
 All Selected

Which Items to Replace:
 Inputs Outputs
 Parameters Comments

OK Cancel

Then go to end of the first module *S-1.1 : Multiple Serial Send* and modify the default LivePremier™ MAC address with the one from your LivePremier™ device (for ex. 80:1F:12:40:59:CE).

- On the contrary, if you plan to control the LivePremier™ Simulator instead of a real LivePremier™ device, then select the *S-1: Init* folder and press F9 to replace the default IP address (192.168.2.140) with the IP address of the computer running the LivePremier™ Simulator (for ex. 192.168.2.50):



Search and Replace

Enter Substring to Replace:
192.168.2.140

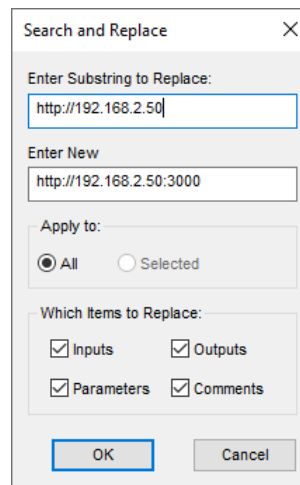
Enter New
192.168.2.50

Apply to:
 All Selected

Which Items to Replace:
 Inputs Outputs
 Parameters Comments

OK Cancel

Press F9 again to replace the default LivePremier™ device access URL (<http://192.168.2.140>) by the LivePremier™ Simulator access URL available on TCP port 3000 (for example <http://192.168.2.50:3000>):



Then go to end of the first module *S-1.1 : Multiple Serial Send* and modify the default LivePremier™ MAC address by the one from the LivePremier Simulator (always 11-22-33-44-55-66).

- If the Web RCS has been configured to be reached only via the HTTPS secured protocol, you will need to replace all the HTTP URL to HTTPS URL.
- Recompile and upload the program on a Crestron controller.

Do not forget to update the connection parameters when launching the demo Xpanel to access your Crestron controller. By default, the Xpanel application will try to connect on 192.168.2.150.

November 2021 - v2.3.0

Connect with us on

